

# Grades 3–8 English Language Arts and Mathematics Tests

## Scoring Leader Handbook



v202 Edition

THE UNIVERSITY OF THE STATE OF NEW YORK  
Regents of The University

T . U , J ., Chancellor, . . . , M ., . D. ....  
T. D . . . , Vice Chancellor, . . . , J.D. ....  
T . . . , J.D. ....  
T D. . . . , P .D. ....  
D . . . D, . . . ....  
T M . . . , . . . , . D. ....  
J M . TT . . . , . D. ....  
J P T . . . , J.D. ....  
JUDT . . . UD . . . , . . . , . D. ....  
T . . . .P, . . . , . D. ....  
Z T . . . D, . . . , . D. ....  
U . . . , . . . , P .D. ....

# Table of Contents

Introduction .....	1
Important Information for Scoring the Tests .....	2
.....	
.....	
.....	
.....	
.....	
.....	
.....	
C A .....	
D A .....	
.....	
A .....	
PBT Scoring Site Organization .....	4
Scoring Site Personnel and Duties .....	5
.....	
p .....	
.....	
C .....	
A .....	
.....	
.....	
.....	
G C G ☒ .....	



# Appendices

App	A:	C	A	.....A
App	:	Op	C	.....A
App	C: G		p	.....A
App	D:	C		.....A
App	:	A		.....A
App	:	p		.....A
App	:	'		.....A
App	G:	'		.....A
App	H:	p		.....A
App	:		p	.....A
App	:			.....A
App	K: p	C		.....A
App	:	/G	p	.....A
App	:	C	p	.....A
App	N:		p	.....A
App	O: App		A	.....A
App	:	App		.....A
App	Q: C	O		.....A
App	:			.....A



# Introduction

*Scoring Leader Handbook* p  
C

p

p

(C )

C

p

p p

p

) p

. A

p

p

C

A

( )

(

p

p

p

Handbook

pp C  
Handbook

ScorePoint Manual.

# Important Information for Scoring the Tests

## Scoring Models

A ( p ) p .  
C ( ) ( )  
p .

## Training Set

A p p ( p p )  
p .

## Practice Set

A p p pp  
p .

## Consistency Assurance Set

A C A (CA ) p p  
p :  
p p  
p .

## Dates for Scoring and Returning PBT Student Answer Sheets

p p p  
O A , ( p:// .p . . / / / .  
).

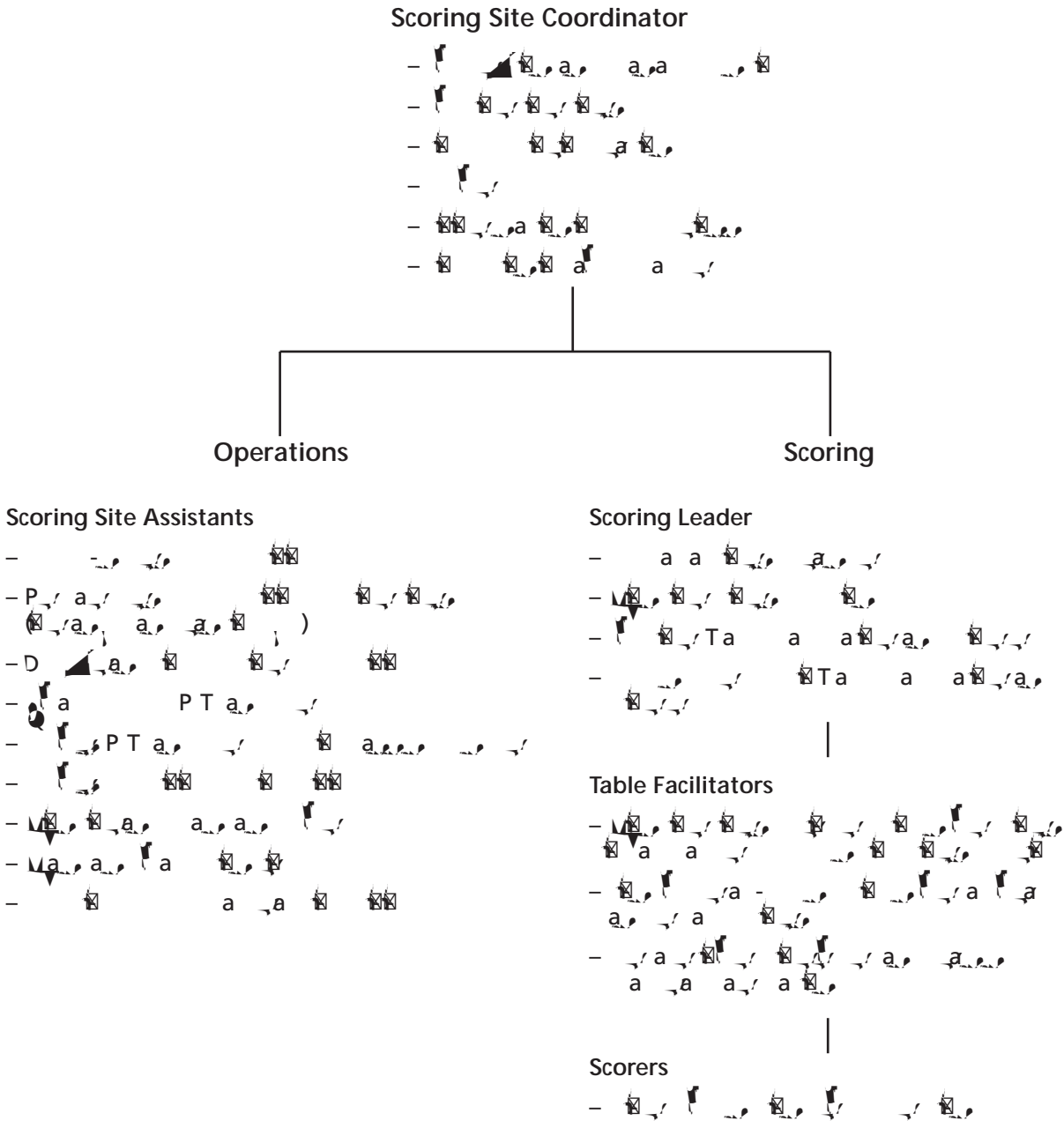
## Scoring Materials

p CD  
D . ' p p  
G A p  
CD . CD p p .





# PBT Scoring Site Organization



All scoring personnel are responsible for maintaining the confidentiality of student responses.

# Scoring Site Personnel and Duties

## Leadership Team

p C A ( )  
p p p  
p p p  
( ) p p p

## Scoring Site Coordinators

p p C p p  
p p p p p



p p

**Table Facilitators**

p ( . . p p p )  
( )  
p .  
O p p  
p p .  
p .  
p p p p  
p p p p  
p :  
p p  
p p p p  
p p p p  
p p p p  
App ).  
p p p p  
p p p p

**Read-Behinds**

A p p  
p ( p ) p . App  
A p p ( . . p p  
) . H

C p p .

### Scorers

p p .

p p

p

G . A

p p

p

p

p

D p

p p

p

p

p

p

### General Requirements for Scoring Committee Member

p p

p

p

p

G p )

G

G

p : ( G )

G ) ( G )

G

p p

p p

p

p

p  
Education Teachers in Scoring Committees

Guidelines for Including Special  
Appendix C

**Note:**

p p p . A

# Scoring Site Layout and Resources

## General Facility Requirements

...

p

A p

p . ( p .)

## Space Requirements

### Scoring Rooms

p

p A A

p p

### Break Area

A p p / p

### PBT Materials Room

p p p

(.) A p

p

## General Scoring Room Setup

p

pp

A

p

p

For CBT scoring p *ScorePoint Manual*





# Preparation for Training

## Training Materials

p

p .

## Scoring Leader Handbook

*Scoring Leader Handbook*

p

p .

## Training Set

p

p

p .A

( p p )

p

p

p

p

( . . G

p

CA

.)

.H

p

p

p

p

p p

.U

p

p p

p

p

p

p

p

. p

p p

.A

p

p p

. p

p

p

G

p

p

p

p

p

p

p

p

p

p

p

p

p

p

p

p

p

p

p

p

p

p

p

p

p

p



# Practice Set

O . p pp p .

p . p p

not p .

p . U p p p p

A p p p .

p or p p p

p . G p p p . H p

p p p .

p p p p p .

p p . A pp p p p

p p p p p p p

p p p p p p p

D p p p

Q H p

: . . : p . ( )

A p p p p

p p p p p

p

p

---

(. . .

).

---

# Training Logistics

p . O C C p  
 p pp  
 . p p p  
 C p p (.) p  
 :  
 p ' p p r  
 / r  
 . r  
 .  
 p p p .  
 .  
 .  
 .  
 .  
 .  
 (.) p p p  
 .  
 p : p r  
 ' .  
 p . A  
 p p p p p

## For CBT Scoring

### Note:

p C A  
 p p : A \_ C. A  
 : A \_ C.  
 (CA p p .)  
 p p p p

## Recommended Assignment of Test Questions to Scorers for English Language Arts Tests

Grade	Scoring Group	Suggested Question Grouping (Student Session 2 Booklet)	Question Types	Estimated Scoring Time Paper Tests Rate/Student	Estimated Scoring Time Computer Tests Rate/Student	Estimated Training Time Required
3		1 , 20	2	2.2	1.1	1.3
		21, 22, 23	3	3.2	1.	2.0
		24, 2	1 , 1	3.3	1.	2.3
4		1 , 20, 21	3	2.	1.	2.0
		22, 23	2	2.	1.3	1.4
		24, 2	1 , 1	3.8	2.2	2.3
5		2 , 30, 31	3	3.2	1.	2.0
		32, 33	2	2.2	1.1	1.3
		34, 3	1 , 1	3.4	2.0	2.3
6		2 , 30, 31	3	4.0	2.	2.0
		32, 33	2	3.2	1.	1.4
		34, 3	1 , 1	4.0	3.2	2.3
7		2 , 30, 31	3	4.	2.	2.0
		32, 33	2	3.4	1.8	1.4
		34, 3 , 3	2 , 1	4.	2.	3.0
8		2 , 30, 31	3	4.2	2.1	2.0
		32, 33	2	3.8	2.2	1.3
		34, 3 , 3	2 , 1	4.3	2.	3.0



## Recommended Assignment of Test Questions to Scorers for Mathematics Tests

Grade	Scoring Group	Suggested Question Grouping (Student Session 2 Booklet)	Question Types	Estimated Scoring Time Paper Tests Rate/Student	Estimated Scoring Time Computer Tests Rate/Student	Estimated Training Time Required
3		2 <sub>g</sub> , 31, 3 <sub>4</sub>	2, 1	1.8	0.	3.0
		30, 32	2	2.0	1.0	1.4
		2, 33	2	1.	1.0	1.4
4		32, 33, 3	3	2.	1.3	1.
		3 <sub>4</sub> , 3	2	2.1	1.1	1.3
		3, 3 <sub>g</sub>	1, 1	2.3	1.2	1.
		33, 3 <sub>4</sub>	2	2.2	1.1	2.0
		32, 3, 3	3	2.1	1.0	2.0
		3, 3 <sub>g</sub>	1, 1	1.8	0.	1.
		32, 3 <sub>4</sub> , 3	3	3.1	1.	2.0
		33, 3, 3	3	3.0	1.	2.0
		3 <sub>g</sub> , 3	1, 1	3.1	1.	2.3
		3 <sub>4</sub> , 3, 3	3	2.	1.	2.0
		3, 3 <sub>g</sub> , 40	3	2.	1.4	2.0
		3, 41	1, 1	2.	1.4	1.
5		3, 3	2	3.2	1.	2.4
		3 <sub>4</sub> , 3 <sub>g</sub> , 3	3	3.	1.8	2.4
		3, 40, 41	2, 1	3.3	1.	2.

p ( p )  
p ( p )


p . p p  
p p p ' .  
p p p .  
p .  
p p p  
p .  
p .  
p p .A  
p .  
p p p  
p p .  
p . p

# Training for Scoring

## Scoring Leader Training

. D  
p p ( ) p

## Scorer Training

p p .A p .U p p ( ) ( ) ( )

## PBT Responses That Should Be Flagged

p p p p pp p  
p p p / ( p p  
p ). p  
p p p  
p p p  
. N . D

For CBT scoring p

*ScorePoint Manual*

p

## Sensitive Responses:

p p C p p  
p .A p :  
p p  
p p  
p p  
p p  
p p



# Scoring Model Codes

C ( )

Scoring Model Code	The Scorers for the school's tests include the following:
1. Regional scoring	a) [Illegible text] ) [Illegible text] ) [Illegible text] ) [Illegible text]
2. Schools from two districts*	a) [Illegible text] ) [Illegible text] ) [Illegible text] ) [Illegible text]
3. Three or more schools within a district	[Illegible text]
4. Two schools within a district (PBT only)	[Illegible text]
5. One school (PBT only)	

# Preparation for Scoring

## Optional Pre-Scoring Meeting

A p p p  
C A  
p C p  
p p ( )

## Correspondence with Scorers

p :  
p  
p C p ( )  
p  
p  
p p ( p p )

## Assigning Scorer Numbers and Questions to PBT Scoring Committee Members

p  
p  
G pp  
p .Q  
p

For CBT scoring p *ScorePoint Manual*

## Assigning Scorers to Scoring Tables

Table with 4 columns and 4 rows containing various symbols (p, /, ., , ) and a colon at the top right.

## Backup Scoring Plan

Table with 3 columns and 4 rows containing various symbols (p, C, ., , , , ) and a colon.

## Scoring Site Setup

Table with 3 columns and 4 rows containing various symbols (p, C, ., , , , , , ) and a colon.

## Opening Remarks

Table with 3 columns and 2 rows containing various symbols (C, p, , , , , , , ) and a colon.

Table with 3 columns and 2 rows containing various symbols (NO, /, p, , , , , , , , , , ) and a colon.

Table with 3 columns and 3 rows containing various symbols (p, p, p, , , , , , , , , , , ) and a colon.



# Scoring

O p p / p C A

Y p p . Y p p .

D p App G). (

p p

p

p

## Table Facilitators or Scoring Leaders

D p C . ☒ p ( p .

# Scoring Site Security

p . A p p  
p C  
C p . A p  
p . A p  
C p

**NOTE: No one is permitted, for any reason, to remove any printed test booklets, PBT answer sheets, ScorePoint login credentials, or scoring materials from the scoring site without authorization from the Scoring Site Coordinator.**

p NY D. p p p C  
p

## Room Security

p p C  
p p p . A

## Materials Room Security

O A p C

## Confidentiality

p p p . Y  
H p p p p *Scoring Leader Handbook* p  
p p p p pp NY D. A  
C C A  
(App A). p

# CBT Scoring Security Recommendations

G  
p p p pp p p

C : p p

U ) p p p p ( p

\_\_\_\_\_ U ( p :// p / p )

p C ( p pp ) p p

D p p p p p

p p *Scoring Leader Handbook.*



# Checking In PBT Materials from Schools

## Schoolwide Scoring (Scoring Model 5) and Districtwide Scoring (Scoring Models 2–4)

... ( )

... C

... C

... p

... ( ) ( )

## Regional Scoring (Scoring Model 1) and Private Contractor Scoring (Scoring Model 6)

... C p ( p )

... p p p /G p

... C ) (App ) ( p

... p ( )

... K p p p

## Randomizing and Building PBT Booklet Folders/Boxes

... ) ( ) ( p ) ( p

p p





NY D. p p

NY D .

pp p p p p p p ( )

pp p NY D

### Quality-Checking PBT Answer Sheets

. D p .

A

### Steps for Quality-Checking the PBT Answer Sheets

(App<sup>p</sup> N).

.Op p p .

p p p p p p

p p p p p

p .

pp p . A



# Forwarding PBT Answer Sheets to Scanning Centers and Returning PBT Booklets to School Administrators

## Steps for Returning PBT Materials to Schools and Scanning Centers

- 1. Place the answer sheets in a separate envelope or folder.
- 2. Place the PBT booklets in a separate envelope or folder.
- 3. Place the envelopes/folders in a larger envelope or folder.
- 4. Address the envelope/folder to the scanning center.
- 5. Place a return address on the envelope/folder.
- 6. Place a return address on the envelope/folder.
- 7. Place a return address on the envelope/folder.
- 8. Place a return address on the envelope/folder.
- 9. Place a return address on the envelope/folder.
- 10. Place a return address on the envelope/folder.
- 11. Place a return address on the envelope/folder.
- 12. Place a return address on the envelope/folder.
- 13. Place a return address on the envelope/folder.
- 14. Place a return address on the envelope/folder.
- 15. Place a return address on the envelope/folder.
- 16. Place a return address on the envelope/folder.
- 17. Place a return address on the envelope/folder.
- 18. Place a return address on the envelope/folder.
- 19. Place a return address on the envelope/folder.
- 20. Place a return address on the envelope/folder.

# Audit Scoring

NY D p .  
pp p p p p  
NY D p .  
A p p  
p . Send completed PBT booklets only, not the student answer sheets.  
A p p p p  
p . C NY D Q p p

# Return of Scoring Ancillary Materials

C p<sup>C</sup> p ( p U DH ) p p  
p .  
:

# Scoring Support

NY D p pp p p . pp  
:  
D CD p  
(*Scoring Leader Handbook*,  
)  
C A ( C A )  
Q H p  
: . . : p. . ( ) p .  
p CD D Ap  
A .

# Questar

Scoring Helpline:

888-382-4246

v202 Scoring Window Dates:

A : Ap

:

Hours: : . . : p. . ( )



# Appendices









# Appendix C: Guidelines for Including Special Education Teachers in Scoring Committees

Note: A

p

p

## Special Education Teaching Titles Awarded Prior to February 2, 2004

Certificate Titles Awarded Prior to February 2, 2004	May Score English Language Arts Tests and/or Mathematics Tests in these Grades	Additional Requirements
12	3	
D	3	
	3	
	3	

## Special Education Teaching Titles Awarded On or After February 2, 2004

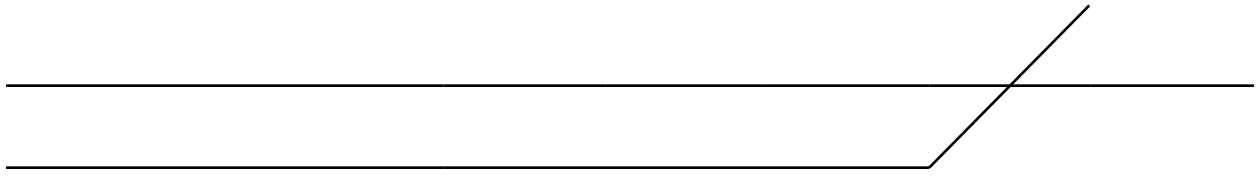
Certificate Titles Awarded On or After February 2, 2004	May Score English Language Arts Tests and/ or Mathematics Tests in these Grades	Additional Requirements
<p>1 D a</p>	<p>3</p>	
<p>D a</p>	<p>3</p>	
<p>D a</p>	<p>3</p>	<p>Additional requirements for this title include: a minimum of 120 hours of postsecondary education, including 60 hours of education beyond the bachelor's degree; a minimum of 30 hours of fieldwork; and a minimum of 120 hours of professional development.</p>
<p>12 D a</p>	<p>3</p>	<p>Additional requirements for this title include: a minimum of 120 hours of postsecondary education, including 60 hours of education beyond the bachelor's degree; a minimum of 30 hours of fieldwork; and a minimum of 120 hours of professional development.</p>
<p>D a a, a, a</p>	<p>3</p>	<p>Additional requirements for this title include: a minimum of 120 hours of postsecondary education, including 60 hours of education beyond the bachelor's degree; a minimum of 30 hours of fieldwork; and a minimum of 120 hours of professional development.</p>
<p>a, a, a</p>	<p>3</p>	<p>Additional requirements for this title include: a minimum of 120 hours of postsecondary education, including 60 hours of education beyond the bachelor's degree; a minimum of 30 hours of fieldwork; and a minimum of 120 hours of professional development.</p>
<p>D a a, a, a</p>	<p>3</p>	<p>Additional requirements for this title include: a minimum of 120 hours of postsecondary education, including 60 hours of education beyond the bachelor's degree; a minimum of 30 hours of fieldwork; and a minimum of 120 hours of professional development.</p>



## Appendix E: Sign-In Log Template

<b>Scoring Sign-In Log</b>					
Date	Time	Room	By	Initials	
<div style="display: flex; justify-content: space-between;"> <span>Site: _____</span> <span>Grade: _____</span> <span>Scoring _____</span> </div>					







---


Appendix I: PBT Return to Scorer Template

**New York State**  
**RETURN TO SCORER**

**GRADE:** \_\_\_\_\_

**BOX #:** \_\_\_\_\_

**CONTENT:**

# Appendix J: PBT Secure Materials Tracking Log

Grades 3-8 English Language Arts and Mathematics Tests  
 Secure Materials Tracking Log

Proctor's Name: \_\_\_\_\_ Root Number: \_\_\_\_\_  
 Grade: \_\_\_\_\_ Subject/Sessions: \_\_\_\_\_

Principal's or Designer's Signature	Proctor's Signature	Room #	Materials Moved from Secure Storage	Location	# and Type of Accounted Test Booklets	Tracking #s for English Language Arts Session 1 booklets and Mathematics Session 1 booklets	Date	Time

# Appendix K: Sample PBT Classroom Roster

SAMPLE  
SAMPLER

PBT CLASSROOM ROSTER									
TOTAL:				TEACHER NAME:					
SCHOOL:				SCHOOL NUMBER:					
Student A	4								
Student B	4								
Student C	4								
Student D	4								

## Appendix L: PBT School/Group List

Testing Room Number	Grade	Number Tested	Comments



## Appendix N: PBT Folder Label Template

Folder Label		
	Score Number	Title









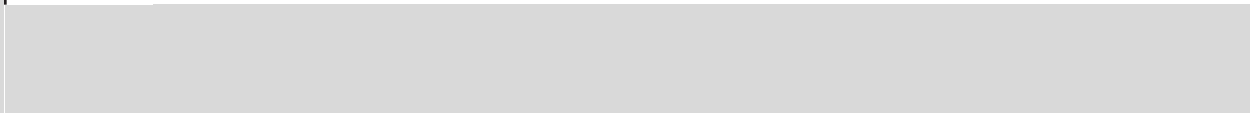








\_\_\_\_\_



Approximate Read Times for Each Question: Mathematics Grades 7 and 8						
Question	Grade 7			Grade 8		
	Points	Electronic	Pencil/Paper	Points	Electronic	Pencil/Paper
Q. 34	2	0.2	0.6	2	0.0	1.20
Q. 35	2	0.6	1.3	2	0.0	1.30
Q. 36	2	0.2	1.0	2	1.0	1.6
Q. 37	2	0.2	0.6	2	0.3	1.2
Q. 38	2	0.3	0.6	2	0.3	1.0
Q. 39	2	0.3	1.0	2	0.2	1.2
Q. 40	2	0.6	1.1	2	0.33	0.0
Q. 41	3	0.6	1.3	3	0.0	1.0



## Appendix R: ScorePoint System Requirements

	10	10.13.4 10.13. , 10.1. , 10.1 .	+
	201 ( a a )		
P	2 D 1. PU		1. +
	12 a 2 1 a a		
	+		
	11. • a , 102		
a a ( )	100 a a a a a a a 1 1 02.11 1 0 a a a a a a a 2		
	1 0 300		



**Grades 3–8**